

## Allplan BIM 2008 Architecture

A summary of the most important innovations in this Version

### Innovations:

- Function, properties and assistant palettes as new dialog elements
- Modification handles
- New Object Snap and Track Tracing functions
- Support for the formats of the future IFC 2x3 and PDF as well as for the traditional formats DWG/DXF 2007 and DGN V8
- New components, such as foundations and installation components
- Plane manager and building structure
- Special functions, such as three- and four-point canopies and parametric modeling
- SpaceNavigator™ as input and control hardware
- Improved design and layout functions, such as expanded dialog boxes for lines, polyline tool, circles, text objects and freeform layout windows; equally spaced alignment and distribution of drawing elements, etc.
- Design2Cost method

### The benefits for you:

- Improved project organization and significant time savings
- Option to work intuitively without function calls
- Simplified design work
- Simplified collaboration and communication between colleagues, planning partners and clients
- Convenient creation and management of an intelligent building model
- More creative freedom in the design of building models
- Intuitive navigation within the model, but also for 2D move operations and zooming
- Better plan design and plan legibility, as well as assistance with error avoidance
- Design and planning according to cost factors

## Allplan BIM 2008 Architecture

The most important innovations in this Version

### Ergonomics

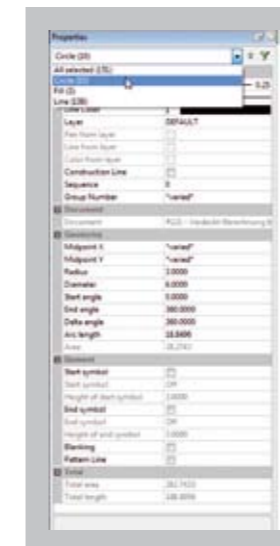
Allplan ergonomics continues to improve with each successive new version. In order to achieve this development goal in the long term, function, properties and assistant palettes were introduced as new dialog elements in Allplan BIM 2008.

The **function palette** integrates and clearly arranges the existing CAD Navigator and its corresponding toolbars "Create", "Create II" and "Modify".

The **properties palette** unifies dialogs with different designs into a single dialog element that always has the same design. All parameters can be entered clearly in a table format. The quick input function further accelerates and simplifies the program. This function can be configured individually and only the most important parameters shown.

The **assistant palette** makes it noticeably faster and easier to work with pre-defined content.

You can now use **handles** for numerous settings and modifications without the need for special commands or dialogs. This makes working with the program substantially more intuitive. In addition, fewer commands are needed, which increases clarity and transparency. The new **Object Snap & Track Tracing** functions make the design process more comfortable. The workflow remains uninterrupted, as it is possible to create geometrically demanding designs without time-consuming construction lines.



Clarity and consistency with the new properties palette

### Interoperability

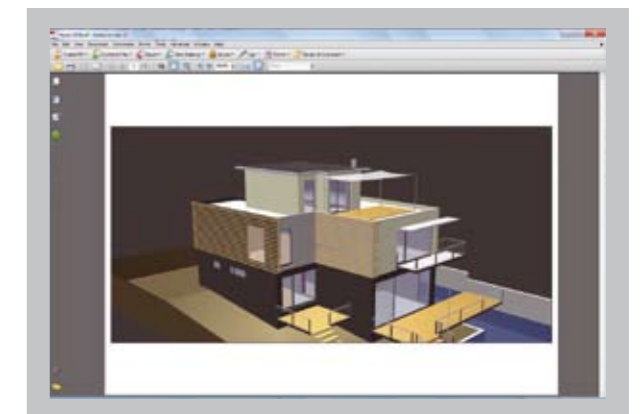
Allplan BIM 2008 runs on **Windows Vista** and supports commonly used formats such as **DWG/DXF 2007** and **DGN V8**.

In addition, we support the future oriented formats **IFC 2x3** and **PDF** to facilitate communication among offices with planning partners and clients that are not using Allplan.

Collaboration with other Allplan users is optimized noticeably using the resources inherent in the Allplan formats **NDW** and **NPL**. This means that Allplan data and as well as additional required data can be emailed directly to planning partners.

Allplan uses the original Adobe libraries for the **import and export of PDF** files. This means that 2D PDF files can be imported and exported comfortably with drag & drop. Independently of the CAD system, the software retains the correct layout, scale and layers in the process.

In addition, it is possible to import and export 3D PDF files. The software thus provides complete building models or details in a very vivid format. In order to view the files, the planning partner or client only requires a copy of Adobe Reader, which is available free of charge.



Interactive architecture model in Adobe Reader, which is available free of charge

**Google's** integrated **SketchUp** interface can also be used to import design models or as a source for new symbols directly from the Web.

# Allplan BIM 2008 Architecture

The most important innovations in this Version

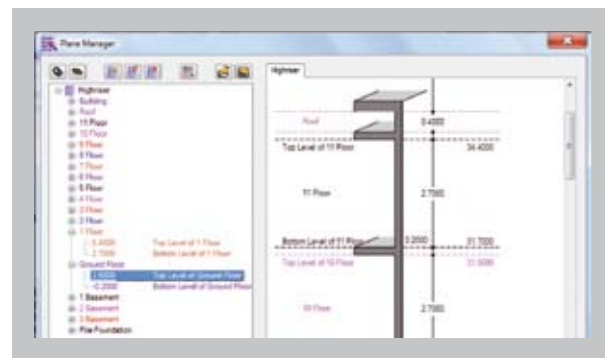
## Intelligent Building Model

The introduction of new components, such as **foundations** and **installation components** complete the scope of commands for the easy creation of an intelligent building model. Moreover, it is possible to define walls, beams, supports and foundations with custom cross-sections.

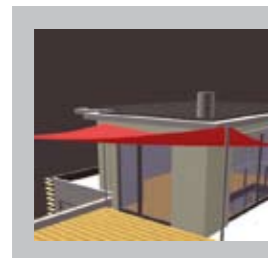
With the assistance of the **plane manager**, you can set up projects with story's, floors, structure and file splitting with just a few clicks.

The **building structure** when based on the plane manager provides a functional data structure that corresponds to the structure of the building. Sections, views and lists can be derived easily and a time-consuming manual creation process is not required.

In addition to the existing file and fileset selections, a new option allows Users to structure building data in a practical manner. This range of options provides all requirements, from simple 2D design to a 3D component-oriented building model. These options can be used in individual projects, but they can also be mixed within a single project.



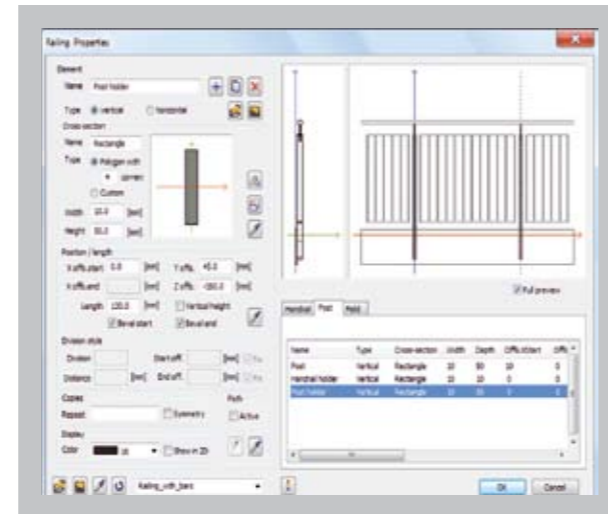
Plane manager for the administration of stories and levels



Four-point canopies created with Allplan BIM 2008

Special functions are available to further refine the building model. For example, the **three- and four-point canopies** provide the option to create freeform curved surfaces and solids or to form gentle component and area transitions.

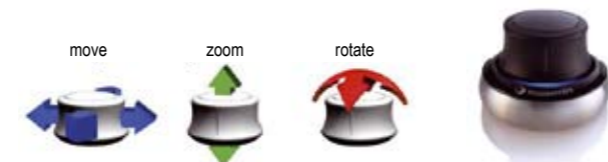
The **parametric modeler** can be used to create three-dimensional, linear placements, such as **areas** and **fences**. It not only animates your design, but also adds a personal touch to the plan design. The pre-set component definitions can be easily changed or can be installed as the basis for your own definitions. This means that users have access to the wide world of parametric modeling.



Dialog box for the creation of parametric definitions

## Intuitive Navigation

State-of-the art input and control hardware such as, **SpaceNavigator™** by 3Dconnexion, can be used for intuitive navigation through a component-based building model. Allplan BIM 2008 is not only specially optimized in this area, but certified as well.



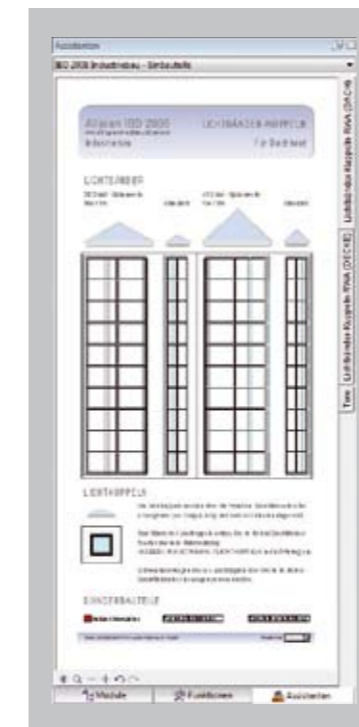
## Design and Layout

Design and layout are among the most frequently used CAD functions. Many improvements were implemented in this area, from a complete revision of **dimensioning** and **extended dialog boxes for lines, polylines, circles, and text object** with beginning and end symbols to support for **freeform layout windows**. The options to left-align or right-align elements or to distribute them at unified intervals contributes to the ability to create complex layouts quickly and easily.

## Manufacturer's Data and Content

Allplan IBD and similar products are available in Germany, Austria, Switzerland and Italy.

Allplan is certified by the German TÜV SÜD Produkt Service for its method of graphic quantity takeoff.



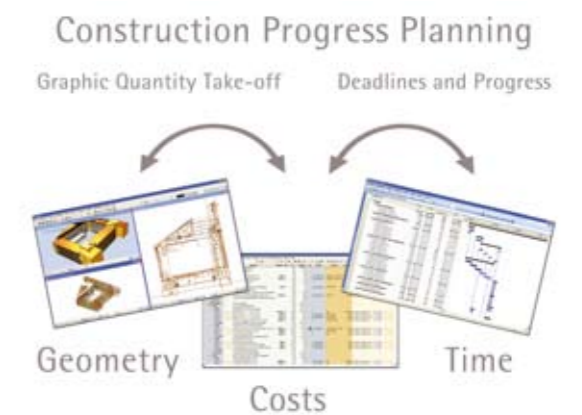
Assistant palette with Allplan IBD Industrial Construction



## Design2Cost

Design2Cost combines Allplan BIM 2008 with an integrated **cost management solution** supported by a construction specific data. In addition to cost determination and classic **tendering, award and invoicing procedures**, it is possible to determine detailed quantities for construction costs and bills of quantity from the virtual building model.

Allplan Architecture and the utilization of **Allplan BCM Quantities and a localized TAI solution** automatically generate an architecture model that is available for layout and visualization, as well as for quantity takeoff. For example, the model can be modified and the effects on costs can be tracked at the same time. In addition to integrated quantity takeoff and cost determination, the system follows along with each drawing detail and notifies the user of any design contradictions. This is achieved with a plausibility check that runs in the background for the different components. If the software identifies a discrepancy, it informs the user with a message during quantity checking. This improved data comparison capacity enables the software to automatically minimize error sources that could cause additional costs and schedule delays later on.



Design2Cost – The right solution for creative design and cost management.

## Additional Information

Detailed information about the current version of the innovative 3D design software Allplan BIM 2008 is also available on the Internet at [www.2008.allplan.com](http://www.2008.allplan.com).